

Stressfree Mini 50 Standard EW (Extra Wide)

Suitable for boats: up to 13.5ft – 26ft / 4-8m
Maximum boat weight: 2.5 tons

The Mini 50 EW Standard winch is designed to suit shallow anchor wells, and is robust and extremely fast.

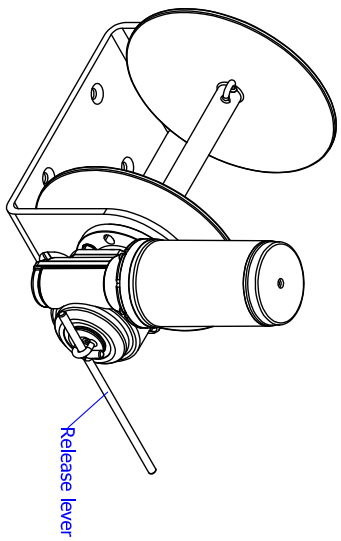
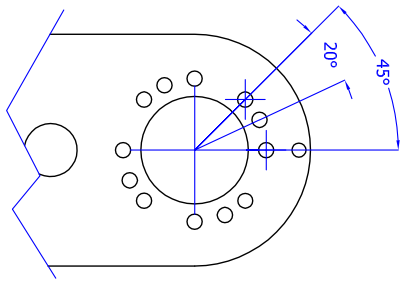
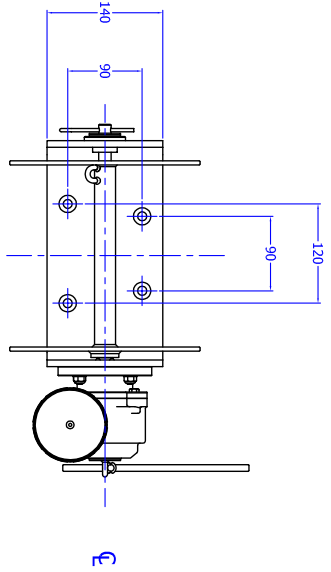
Product	Line Speed Max
Mini 50 Standard EW	170 feet per min. / 52 meters per min.
Baseplate	Diameter Drum
0.31" / 8mm pressed	9.05" / 230mm
Voltage	Gearbox
12v	50S
Motor power with High Torque	Emergency Manual Override
500watt	√
Shaft size	Winch Weight
0.98" / 25mm	48.50lbs / 18kgs



The Mini 50 Standard EW anchor winch also features:

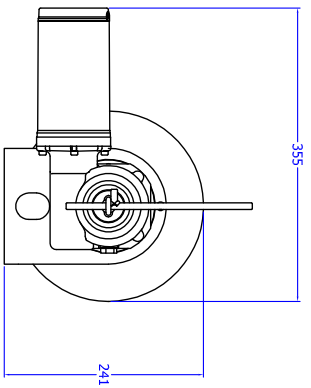
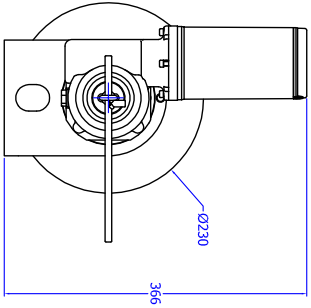
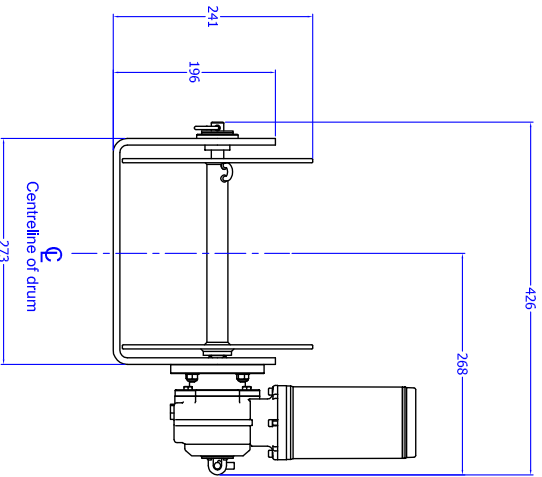
- Adaptable fit and varied mounting options, with the ability to reset the gearbox and motor assembly in 8 different configurations to best suit your anchor well
 - Optional deck mounting
 - Premium quality Italian motor and gearbox
 - Waterproof 80amp circuit breaker with thermal overload cut-out
 - 50 series double anodised gearbox to prevent corrosion
 - Solid stainless steel drive shaft
 - Grease impregnated acetyl bush for superior performance
 - Constructed from 316 L grade marine stainless steel
 - Optional Pro-series guards upgrade
 - All rope and chain is powered on and off the drum
 - Optional waterproof wireless remote
 - 5-year warranty
- **Drum capacity options:**
- o 75m of 8mm nylon spliced to 6m of short link chain
 - o 100m of 6mm double braid eye spliced to 5m of 8mm nylon spliced to 6 meters of 6mm short link chain

**Recommend dual batteries with the battery switch set to BOTH*



The gearbox mounting holes in the mounting bracket allow the motor and drive to be installed at 4 angles to suit different anchor well configurations. Another 8 adjustment angles are available at 20° and 45° from each of the basic 4 mounting holes.

Note: the release lever is shown as it is included with the product but is only placed on the winch in emergency situations.



© COPYRIGHT 2017
Stressfree Marine Pty.Ltd.

Issue		Ref.		Revision		Drawn		Apprv.		Date		ANGES ±		TOLERANCES Unless otherwise stated		SCALE		MATERIAL		FINISH		DO NOT SCALE DIMENSIONS IN MILLIMETRES UNLESS OTHERWISE STATED		DRAWING No.	
1				REVISON								NO DEC. ±		NO DEC. ±		Drawn		316 Stainless Steel		Satin				TBA	
2										17.4.15		HOLE DIM. ±		1 DEC. PL. ±		Checked									
3										25.5.16		NO DEC. ±		2 DEC. PL. ±		Design OK									
										21.4.17				1 DEC. ±		Approved									
										21.4.17				2 DEC. ±		DATE									
										2/05/08								stressfree marine Pty Ltd®							